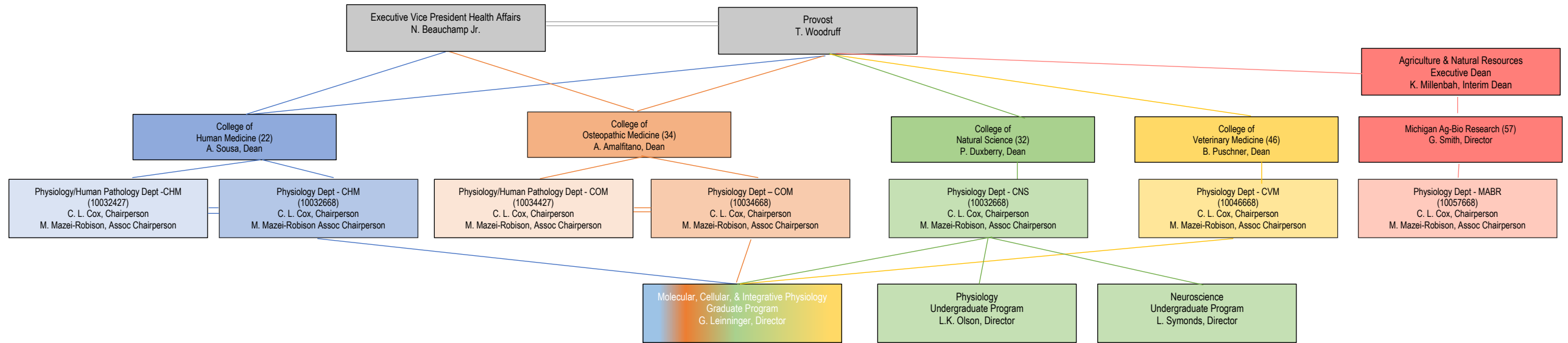


Michigan State University Physiology & Human Pathology Departments Organization Chart



Investigative Histopathology Laboratory & Service Center
Amy Allen
Histology Technician II
*Amy Porter
Histology Technician III/Supv
JessieLee Neumann
Histology Technician II

McCabe/Parameswaran Research Laboratory
*Narayan Parameswaran, Ph.D.
Professor

Xiao Research Laboratory
*Hua Xiao, Ph.D.
Professor

Gallo Research Laboratory
*Kathleen Gallo, Ph.D.
Professor
Summer Richardson
Scholar

Subramanian Research Laboratory
*Hanharan Subramanian, Ph.D.
Assistant Professor

Uhal Research Laboratory
*Bruce Uhal, Ph.D.
Professor

Weber Research Laboratory
*Arthur Weber, Ph.D.
Professor

Das Research Laboratory
*Rupali Das, Ph.D.
Assistant Professor

Classroom Based & Multi-College Faculty
Julia Busik, Ph.D.
Professor
Andrea Doseff, Ph.D.
Professor
Anthony Paganini, Ph.D.
Associate Professor
Susan Way, M.A.
Acad. Specialist – Curriculum
Erika Williams, Ph.D.
Assistant Professor

Administrative Ofc – OE Group
*Nicholas Bourland, B.A.
Administrative Assistant III/Supv
Inna McNamara, B.A.
Research Administrator II
Sherri Reese, Ph.D.
Unit Human Resources Admin I
Nhia (Tyler) Lee, M.A.
Communications Manager I

Administrative Ofc – NE Group
Barbara Bird
Secretary II
Vacant
Educational Program Coord II
Jasmine Jackson
Project/Event Coordinator
*Sherri Reese (Admin Ofc - OE)
As Supervisory Reporting Line Only

Cox Research Laboratory
Joseph Beatty, Ph.D.
Assistant Professor
*Charles L. Cox, Ph.D.
Professor

Andrechek Research Laboratory
*Eran Andrechek, Ph.D.
Associate Professor

Teaching Laboratory Support
*Nicholas Bourland (Admin - OE)
As Supervisory Reporting Line Only
Sydney Miller, B.S.
Instruc Equip & Supplies Tech
Keeler Steele, B.S.
Instruc Equip & Supplies Tech

BPS Operations/ Safety Office
*Nicholas Bourland (Admin - OE)
As Supervisory Reporting Line Only
Jessica Bennett, B.S.
Operations/Safety Coord/Supv
(50% MMG/ 50% PSL)

PSL/MMG Facilities Center
*Jessica Bennett (BPS Ops)
As Supervisory Reporting Line Only
Jessica Spitzley
Operations Coordinator
(50% MMG/ 50% PSL)

Vacant Research Laboratory
Neuroscience
Assistant/Associate Professor

Vacant Research Laboratory
Assistant/Associate Professor

McCabe/Parameswaran Research Laboratory
*Laura McCabe, Ph.D.
MSU Foundation Professor

Bazil Research Laboratory
*Jason Bazil, Ph.D.
Assistant Professor

Classroom Based & Multi-College Faculty
Joseph Beatty, Ph.D.
Assistant Professor
Charles L. Cox, Ph.D.
Professor
Andrea Doseff, Ph.D.
Professor
Paul Kowalski, Ph.D.,
Assistant Professor
Janice Schwartz, Ph.D.
Assistant Professor
Susan Way, M.A.
Acad. Specialist – Curriculum

Busik Research Laboratory
*Julia Busik, Ph.D.
Professor
V. Katkooi, Ph.D.
Assistant Professor
Research Delaney McFarland, B.A.
Research Assistant I
Prabha Nepal, Ph.D.
Research Associate

Crandall Research Laboratory
Dawn Auto
Research Assistant II
*Shane Crandall, Ph.D.
Assistant Professor
Hye Hyun Kim, Ph.D.
Research Associate

DiCarlo Research Laboratory
*Stephen DiCarlo, Ph.D.
Professor
Heidi Lujan, Ph.D.
Research Assistant III

Wiseman Research Laboratory
*Robert Wiseman, Ph.D.
Professor

Classroom Based & Multi-College Faculty
Joseph Beatty, Ph.D.
Assistant Professor
Julia Busik, Ph.D.
Professor
Charles L. Cox, Ph.D.
Professor
Valerie Hedges, Ph.D.
Assistant Professor
Casey Henley, Ph.D.
Assistant Professor
Rachel Jansen, B.S.
Instructor
Cameron Prigge, Ph.D.
Assistant Professor (8/16/2022)
Marty Spranger, Ph.D.
Assistant Professor
Laura Symonds, Ph.D.
Associate Professor, Ph.D.
Jennifer Taylor, Ph.D.
Assistant Professor
Theodore Towse, Ph.D.
Associate Professor (8/16/2022)
Erica Wehrwein, Ph.D.
Associate Professor
John Zubek, Ph.D.
Assistant Professor
Vacant – Neuroscience
Assistant Professor (Fxd Tm)

Doseff Research Laboratory
*Andrea Doseff, Ph.D.
Professor

Undergraduate Advising Office
Barbara Bird
Secretary II
Becky La, M.S.
Specialist – Advisor
Lori Seischab, Ph.D.
Specialist – Advisor
Vacant
Specialist – Advisor

Gulbransen Research Laboratory
Jacques Gonzales, Ph.D.
Research Associate
*Brian Gulbransen, Ph.D.
MSU Fdn, Associate Professor
Jonathon McClain, M.S.
Research Assistant II
Beatriz Thomasi, Ph.D.
Research Associate

Laumet Research Laboratory
Sabrina de Souza, Ph.D.
Research Associate
Joseph Folger, Ph.D.
Research Assistant II
*Geoffroy Laumet, Ph.D.
Assistant Professor
Kufreobong Inyang, Ph.D.
Research Associate

Leininger Research Laboratory
*Gina Leininger, Ph.D.
Associate Professor
Raluca Bugescu, B.S.
Research Assistant II

Multi-College Faculty
Charles L. Cox, Ph.D.
Professor

Molecular Metabolism & Disease Mass Spectrometry Core
*Todd Lydic, Ph.D.
Research Specialist

Mazei-Robison Research Laboratory
*Michelle Mazei-Robison, Ph.D.
Associate Professor
Kenneth Moon, B.S.
Research Assistant I

Mohr Research Laboratory
*Susanne Mohr, Ph.D.
Associate Professor

Olson Research Laboratory
*L. Karl Olson, Ph.D.
Associate Professor

Proshlyakov Research Laboratory
*Denis Proshlyakov, Ph.D.
Professor

1. Lab/Group colors correspond to department
2. Individuals with multiple colleges, non-primary appointments colored in primary department color
3. * denotes lab/group supervisor, reports to Chair
4. Absence of a lab/group supervisor or reporting line signifies all members report to Chairperson

Multi-College Faculty
Julia Busik, Ph.D.
Professor
Susanne Mohr, Ph.D.
Associate Professor

PSL Curriculum Development & Academic Technology Studio
Christopher Shaltry, Ph.D.
Acad. Specialist – Curriculum
Susan Way, M.A.
Acad. Specialist - Curriculum

Robison Research Laboratory
Andrew Eagle, Ph.D.
Assistant Professor
Kenneth Moon, B.S.
Research Assistant I
*A.J. Robison, Ph.D.
Associate Professor

Root-Bernstein Research Laboratory
*Robert Root-Bernstein, Ph.D.

Wang Research Laboratory
Jiao Chen, Ph.D.
Research Associate
Qi Ding, Ph.D.
Assistant Professor
Yuen Gao, Ph.D.
Research Associate
*Hongbing Wang, Ph.D.
Professor