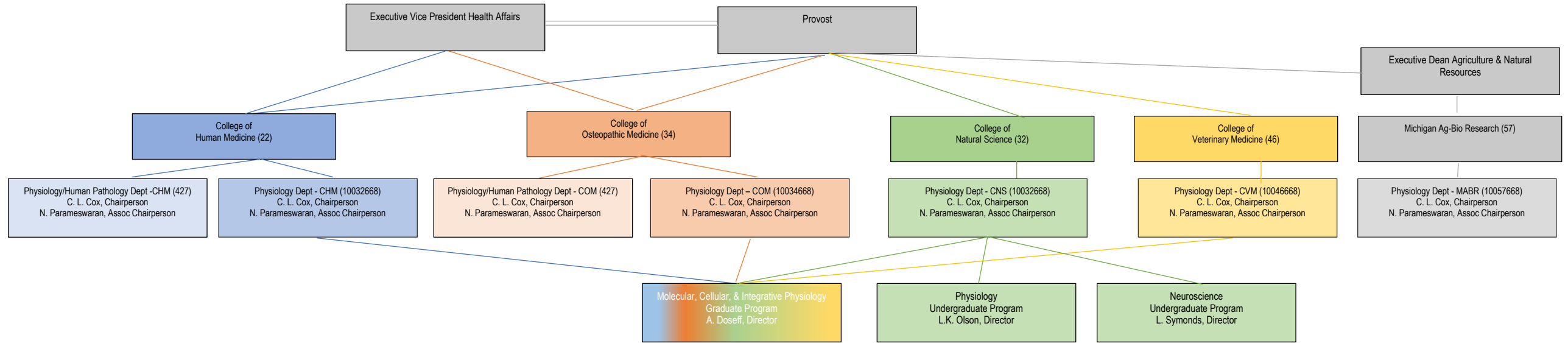


**Michigan State University Physiology & Human Pathology Departments Organization Chart**



**Investigative Histopathology Laboratory & Service Center**  
Amy Allen  
Histology Technician II  
\*Amy Porter  
Histology Technician III/Supv  
JessieLee Neumann  
Histology Technician II

**McCabe/Parameswaran Research Laboratory**  
\*Narayan Parameswaran, Ph.D.  
Professor

**Xiao Research Laboratory**  
\*Hua Xiao, Ph.D.  
Professor  
Yue Luo  
Visiting Scholar

**Gallo Research Laboratory**  
\*Kathleen Gallo, Ph.D.  
Professor

**Subramanian Research Laboratory**  
\*Hariharan Subramanian, Ph.D.  
Assistant Professor

**Uhal Research Laboratory**  
\*Bruce Uhal, Ph.D.  
Professor

**Weber Research Laboratory**  
\*Arthur Weber, Ph.D.  
Professor

**Classroom Based & Multi-College Faculty**  
Julia Busik, Ph.D.  
Professor  
Andrea Doseff, Ph.D.  
Professor  
Richard Miksicek, Ph.D.  
Professor  
Anthony Paganini, Ph.D.  
Associate Professor  
Susan Way, M.A.  
Acad. Specialist – Curriculum  
Erika Williams, Ph.D.  
Assistant Professor

**Administrative Office**  
Barbara Bird  
Secretary II  
\*Nicholas Bourland, B.A.  
Administrative Assistant III/Supv  
John Eynon, M.A.  
Research Administrator II  
Lisa Goforth  
Accountant I  
Jasmine Jackson  
Project/Event Coordinator  
Vacant  
Unit Human Resources Admin I

**Andrechek Research Laboratory**  
\*Eran Andrechek, Ph.D.  
Associate Professor

**Cox Research Laboratory**  
Joseph Beatty, Ph.D.  
Assistant Professor  
\*Charles L. Cox, Ph.D.  
Professor

**Das Research Laboratory**  
\*Rupali Das, Ph.D.  
Assistant Professor

**Classroom Based & Multi-College Faculty**  
Shirley Siew, Ph.D.  
Professor

**Teaching Laboratory Support**  
\*Nicholas Bourland (Admin Ofc)  
As Supervisory Reporting Line Only  
Molly Griffin, B.S.  
Instruc Equip & Supplies Tech  
Yvonne Ogrodzinski, B.S.  
Instruc Equip & Supplies Tech

**BPS Operations/ Safety Office**  
\*Nicholas Bourland (Admin Ofc)  
As Supervisory Reporting Line Only  
Melissa Parsons  
Operations/Safety Coord/Supv  
(50% MMG/ 50% PSL)

**PSL/MMG Facilities Center**  
\*Melissa Parsons (BPS Ops)  
As Supervisory Reporting Line Only  
Jessica Bennett, B.S.  
Operations Coordinator  
(50% MMG/ 50% PSL)

**McCabe/Parameswaran Research Laboratory**  
\*Laura McCabe, Ph.D.  
MSU Foundation Professor  
Subhashri Das, M.S. (5/1/21)  
Research Assistant II

**Wiseman Research Laboratory**  
\*Robert Wiseman, Ph.D.  
Professor

**Classroom Based & Multi-College Faculty**  
Joseph Beatty, Ph.D.  
Assistant Professor  
Charles L. Cox, Ph.D.  
Professor  
Andrea Doseff, Ph.D.  
Professor  
Paul Kowalski, Ph.D.,  
Assistant Professor  
Janice Schwartz, Ph.D.  
Assistant Professor  
Susan Way, M.A.  
Acad. Specialist – Curriculum

**Bazil Research Laboratory**  
\*Jason Bazil, Ph.D.  
Assistant Professor

**Busik Research Laboratory**  
\*Julia Busik, Ph.D.  
Professor  
Sandra Hammer, Ph.D.  
Research Associate  
Delaney McFarland, B.A.  
Research Assistant I

**Crandall Research Laboratory**  
Dawn Autio  
Research Assistant II  
\*Shane Crandall, Ph.D.  
Assistant Professor  
Suryadeep Dash, Ph.D.  
Research Associate  
Hye Hyun Kim, Ph.D.  
Research Associate

**DiCarlo Research Laboratory**  
\*Stephen DiCarlo, Ph.D.  
Professor  
Heidi Lujan, Ph.D.  
Research Assistant III

**Classroom Based & Multi-College Faculty**  
Joseph Beatty, Ph.D.  
Assistant Professor  
Julia Busik, Ph.D.  
Professor  
Charles L. Cox, Ph.D.  
Professor  
Adele Denison, Ph.D.  
Associate Professor  
Valerie Hedges, Ph.D.  
Assistant Professor  
Casey Henley, Ph.D.  
Assistant Professor  
Rachel Jansen, B.S.  
Instructor  
Nikhil Pasula, B.S.  
Instructor  
Mark Reimers, Ph.D.  
Associate Professor  
Marty Spranger, Ph.D.  
Assistant Professor  
Laura Symonds, Ph.D.  
Associate Professor, Ph.D.  
Jennifer Taylor, Ph.D.  
Assistant Professor  
Erica Wehrwein, Ph.D.  
Associate Professor  
John Zubeck, Ph.D.  
Assistant Professor

**Doseff Research Laboratory**  
Summer Blanco, B.S.  
Scholar  
Angie Bustos Rangel, M.S.  
Visiting Scholar  
\*Andrea Doseff, Ph.D.  
Professor  
Allison Gijdoda  
Research Assistant II  
Ka'shawn Robertson  
Scholar

**Undergraduate Advising Office**  
Barbara Bird  
Secretary II  
Becky La, M.S.  
Specialist – Advisor  
Kanchan Pavangadkar, Ph.D.  
Specialist – Advisor  
Lori Seischab, Ph.D.  
Specialist - Advisor

**Gulbransen Research Laboratory**  
Vladimir Grubisic, Ph.D.  
Research Associate  
\*Brian Gulbransen, Ph.D.  
MSU Fdn, Associate Professor  
Jonathon McClain, B.S.  
Research Assistant II  
Luisa Seguella, M.S.  
Visiting Scholar

**Laumet Research Laboratory**  
Joseph Folger  
Research Assistant II  
\*Geoffroy Laumet, Ph.D.  
Assistant Professor  
Kutreobong Inyang, Ph.D.  
Research Associate

**Leininger Research Laboratory**  
\*Gina Leininger, Ph.D.  
Associate Professor  
Anna Makela, B.S.  
Research Assistant I

**Multi-College Faculty**  
Charles L. Cox, Ph.D.  
Professor

**Molecular Metabolism & Disease Mass Spectrometry Core**  
\*Todd Lydic, Ph.D.  
Research Specialist

**Mazei-Robison Research Laboratory**  
Vedrana Bali, Ph.D.  
Research Associate  
\*Michelle Mazei-Robison, Ph.D.  
Associate Professor  
Kenneth Moon, B.S.  
Research Assistant I (50%)

**Mohr Research Laboratory**  
\*Susanne Mohr, Ph.D.  
Associate Professor

**Olson Research Laboratory**  
\*L. Karl Olson, Ph.D.  
Associate Professor

**Proshlyakov Research Laboratory**  
\*Denis Proshlyakov, Ph.D.  
Professor

1. Lab/Group colors correspond to department
2. Individuals with multiple colleges, non-primary appointments colored in primary department color
3. \* denotes lab/group supervisor, reports to Chair
4. Absence of a lab/group supervisor or reporting line signifies all members report to Chairperson

**Multi-College Faculty**  
Julia Busik, Ph.D.  
Professor  
Susanne Mohr, Ph.D.  
Associate Professor

**PSL Curriculum Development & Academic Technology Studio**  
Christopher Shaltry, Ph.D.  
Acad. Specialist – Curriculum  
Susan Way, M.A.  
Acad. Specialist - Curriculum

**Robison Research Laboratory**  
Andrew Eagle, Ph.D.  
Assistant Professor  
Kenneth Moon, B.S.  
Research Assistant I (50%)  
\*A.J. Robison, Ph.D.  
Associate Professor

**Root-Bernstein Research Laboratory**  
\*Robert Root-Bernstein, Ph.D.

**Wang Research Laboratory**  
Jiao Chen, Ph.D.  
Research Associate  
Qi Ding, Ph.D.  
Assistant Professor  
\*Hongbing Wang, Ph.D.  
Professor  
Jillian Matasovsky, B.S.  
Research Assistant I  
Jianhua Ren, Ph.D. (50%)  
Research Associate